



INSTALLATION INSTRUCTIONS

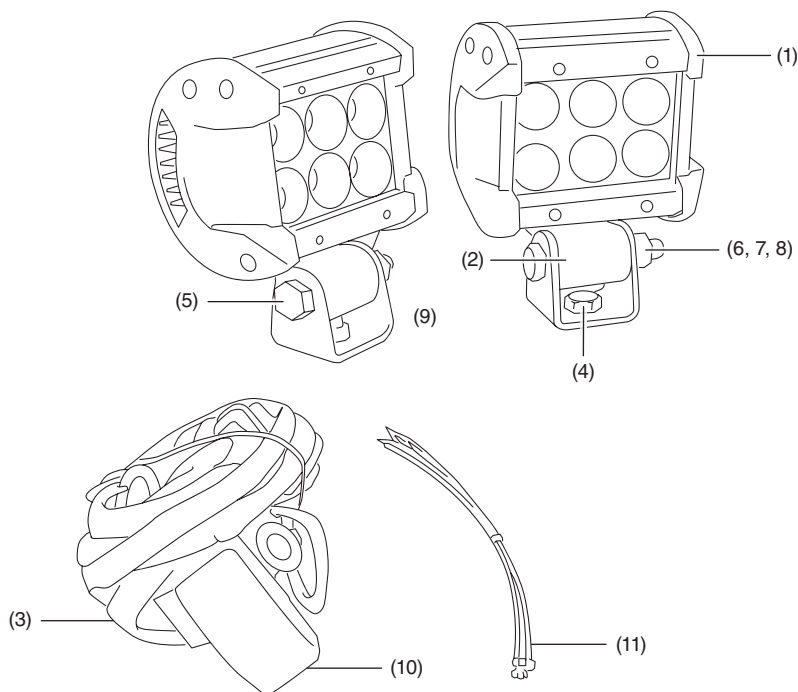
Accessory
**AUXILIARY LED
LIGHTS**
P/N 0SV41-HL6-A10

Application
**SXS1000S2X/S2XD/S2R/
S2RD/S4X/S4XD**

Publications No.
MII 17811
Issue Date
May 2022

Honda Dealer: Please give a copy of these instructions to your customer.

PARTS LIST

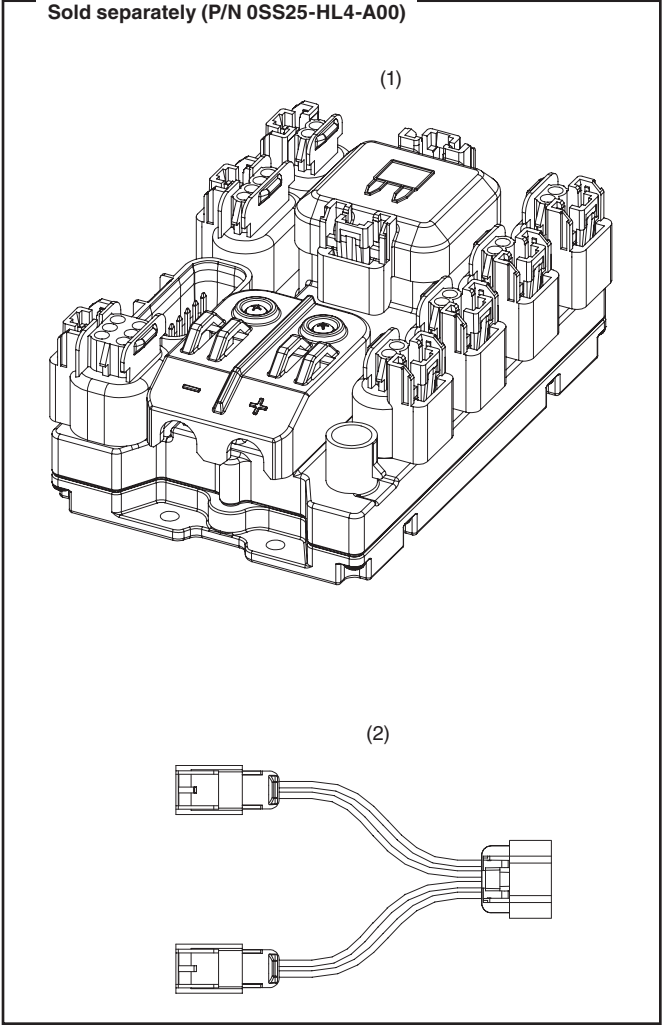


No.	Description	Qty
(1)	Auxiliary light	2
(2)	Auxiliary light mounts	2
(3)	Auxiliary light wire harness	1
(4)	M8 × 20 mm Bolt	2
(5)	M8 × 50 mm Bolt	2
(6)	M8 Nut	4
(7)	M8 Lock washer	4
(8)	M8 Flat washer	4
(9)	Auxiliary light bottom mount assembly	2
(10)	Switch	1
(11)	Zip tie	12

REQUIRED ACCESSORIES

The items below are required for the installation of this accessory.

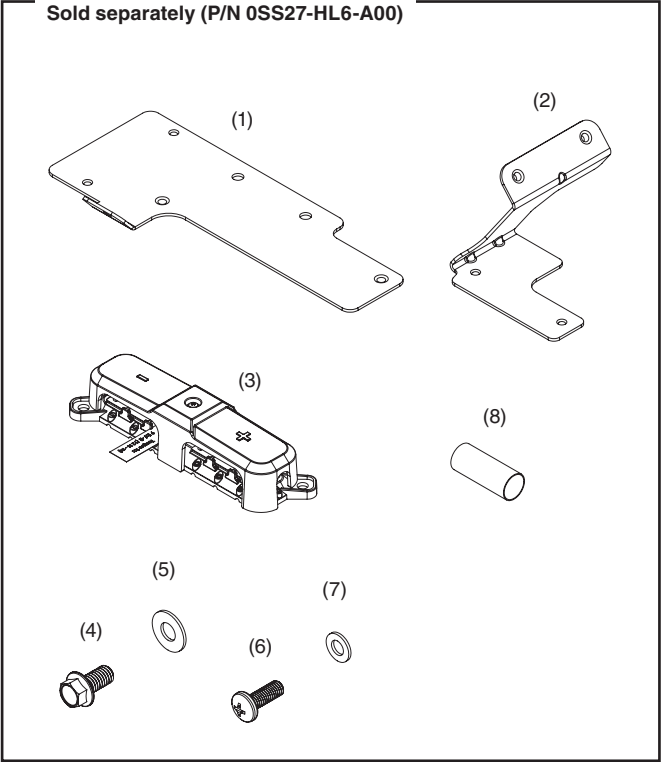
Fuse Box
Sold separately (P/N 0SS25-HL4-A00)



The diagram shows a detailed view of a fuse box (1) with multiple terminals and a central switch. Below it is a 4-pin to 2-pin Y-splitter harness (2) with two 4-pin connectors and one 2-pin connector.

No.	Description	Qty
(1)	Fuse box switcher	1
(2)	Harness, 4-pin to 2-pin (Y-splitter)	1

Busbar
Sold separately (P/N 0SS27-HL6-A00)

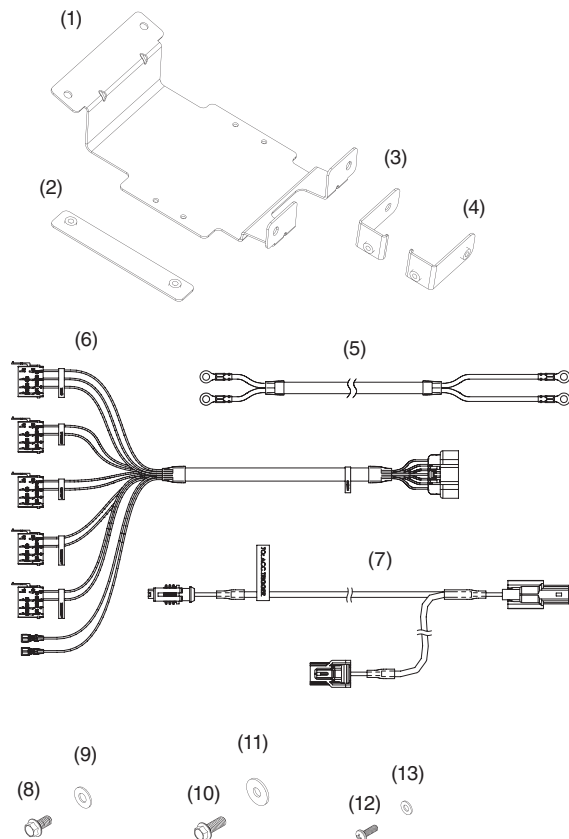


The diagram illustrates the busbar assembly components. (1) is a large rectangular main mounting plate. (2) is a Z-shaped lower support bracket. (3) is a rectangular busbar with electrical terminals. (8) is a cylindrical heat shrink tube. (4) is a flange screw, (5) is a flat washer, (6) is a Phillips pan-head screw, and (7) is another flat washer.

No.	Description	Qty
(1)	Main busbar mounting plate	1
(2)	Busbar lower support bracket	1
(3)	Busbar	1
(4)	M6 × 12 mm flange screw (8 mm head)	4
(5)	M6 × 14 mm flat washer	4
(6)	Phillips pan-head screw M5 × 14 mm	2
(7)	M5 × 10 mm flat washer	2
(8)	Heat shrink	2

Fuse Box Mount Kit

Sold separately (P/N 0SS26-HL6-A00)

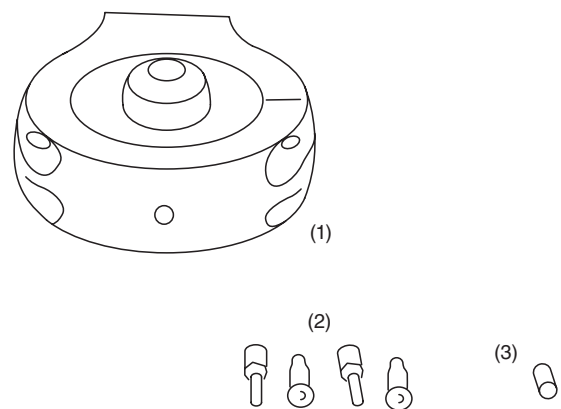


No.	Description	Qty
(1)	Fuse box mounting plate	1
(2)	Front under bracket	1
(3)	Driver side L-bracket	1
(4)	Passenger side L-bracket	1
(5)	Input power cables	1
(6)	Switch wiring harness	1
(7)	Accessory trigger cable	1
(8)	8 mm hex head M6 flange screw, 12 mm long	4
(9)	M6 flat washer, 14 mm o.d.	4
(10)	8 mm hex head M6 flange screw, 16 mm long	2
(11)	M6 flat washer, 18 mm o.d.	2
(12)	M4 × 0.7 phillips screw, 12 mm long	4
(13)	M4 flat washer	4

38 mm Clamp for Bumper Mounting

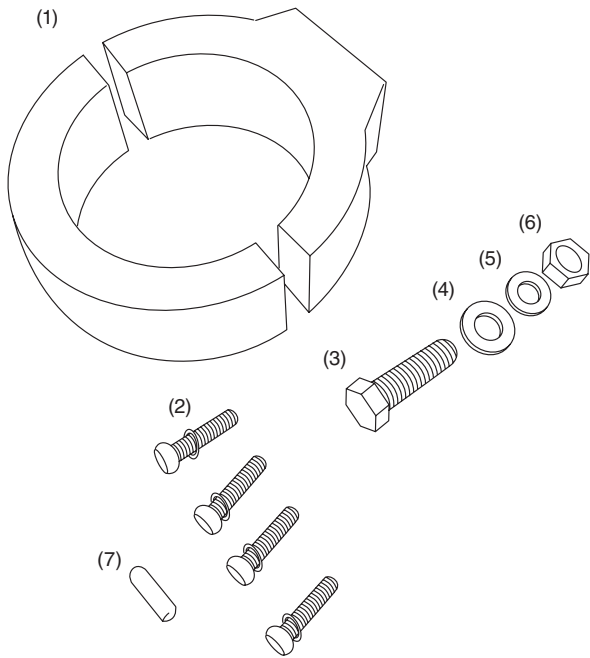
Sold separately (P/N 0SV31-HL3-201A)

*2 required



No.	Description	Qty
(1)	M4 × 14 mm Cap head screw	4
(2)	M4 Lock washer	4
(3)	M6 × 10 mm Set screw	1

51 mm Clamp for OPS Mounting
Sold separately (P/N 0SV31-HL6-301A)
*2 required



No.	Description	Qty
(1)	M4 × 14 mm Cap head screw	4
(2)	M4 Lock washer	4
(3)	M6 × 20 mm Bolt	1
(4)	M6 Flat washer	1
(5)	M6 Lock washer	1
(6)	M6 Nut	1
(7)	M4 × 10 mm Set screw	1

TOOLS AND SUPPLIES REQUIRED

- End wrench 13 mm
- End wrench 10 mm
- Allen wrench 4 mm
- Allen wrench 3 mm
- Allen wrench 2 mm

TORQUE CHART

Tighten all screws, bolts, and nuts to their specified torque values. Refer to the Service Manual for the torque values of the removed parts.

Item	N·m	kgf·m	lbf·ft
M4 Socket screw	2.8	0.3	2
M8 Bolt	10	1.2	7.4
M6 Bolt	7	0.7	5.2

USE AND CARE INFORMATION

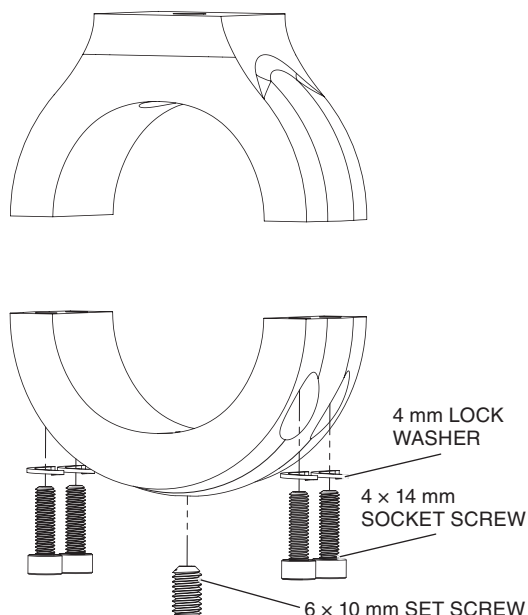
- Check the accessory mounts frequently and retighten if necessary.
- When this accessory becomes dirty, rinse it thoroughly with cool water to remove loose dirt, and then wash with warm, soapy water and a clean cloth or sponge. Do not use a brush to clean this accessory as it may scratch the surface.
- Never use petroleum solvents such as gasoline, thinner and benzine to clean this accessory. Also do not use acid or alkaline cleaners.

INSTALLATION

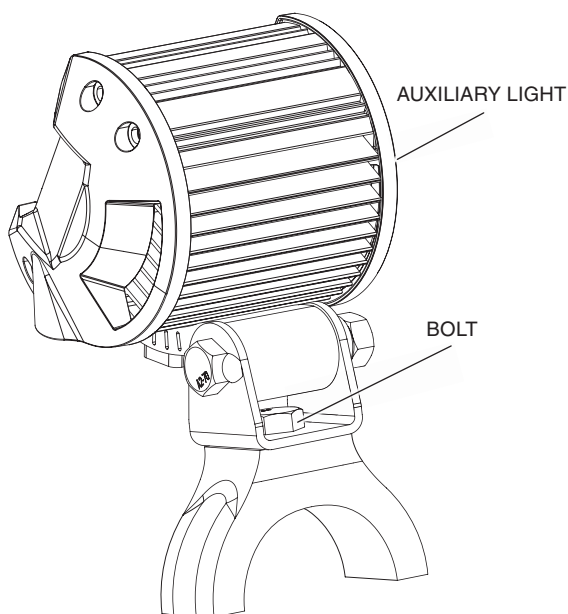
NOTE: Round tube clamp assembly.

1. Install all required accessories before starting installation.

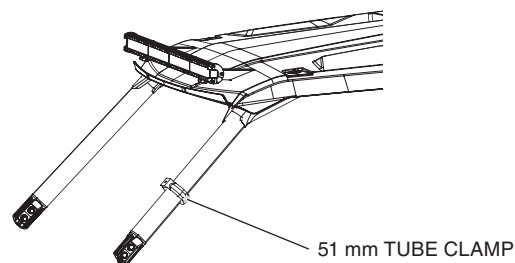
2. **Clamp**
Disassemble the clamp by unscrewing Part No.5 with a 3 mm Allen wrench.



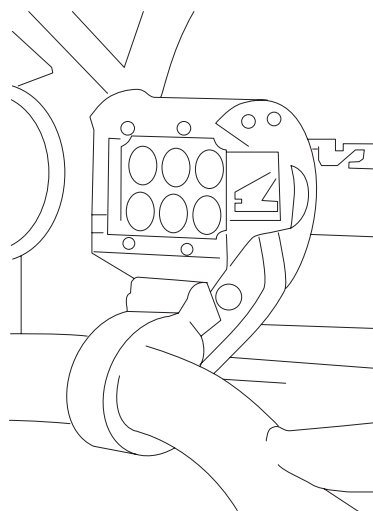
3. **Mount light to clamp.**
51 mm Clamp: Use the M6 x 20 mm bolt that is included with the clamp and screw it to onto the flat surface of the clamp.
38 mm Clamp: Use the M8 x 20 mm bolt that is installed in the Auxiliary light mount and screw it onto the flat surface of the clamp.



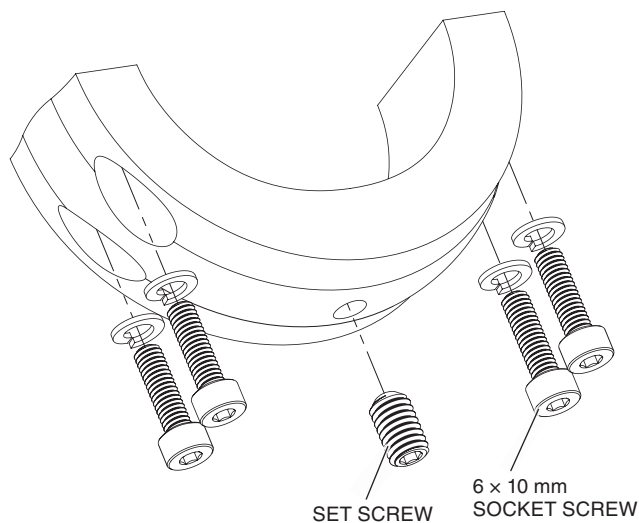
4. **51 mm Clamp mounting to OPS "A" Pillar.**
Mount the clamp to the A Pillar. Orientate the clamp so that the clamp and light it is facing forward.



5. **38 mm Clamp Mounting to Front Bumper**
Mount the Clamp to the Front Bumper. Rotate the clamp so it is facing the grill at an approximate 45° angle then tilt the light forward to desired adjustment.

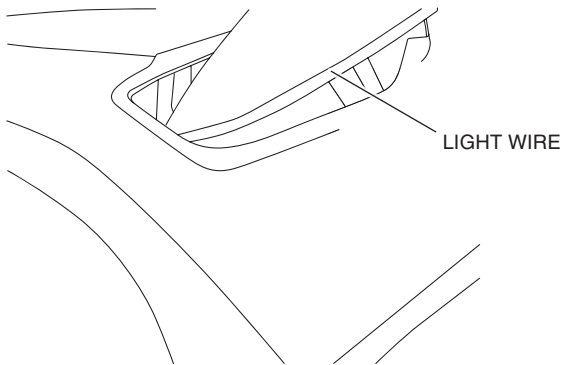


6. **Clamp assembly**
Once you have the tube clamp and light placed tighten the set screw to secure it to the a pillar.

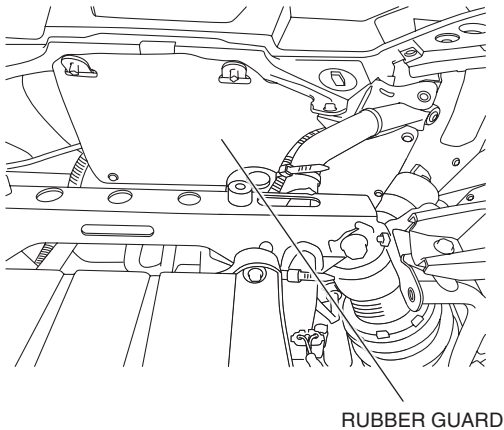


7. Wire Routing

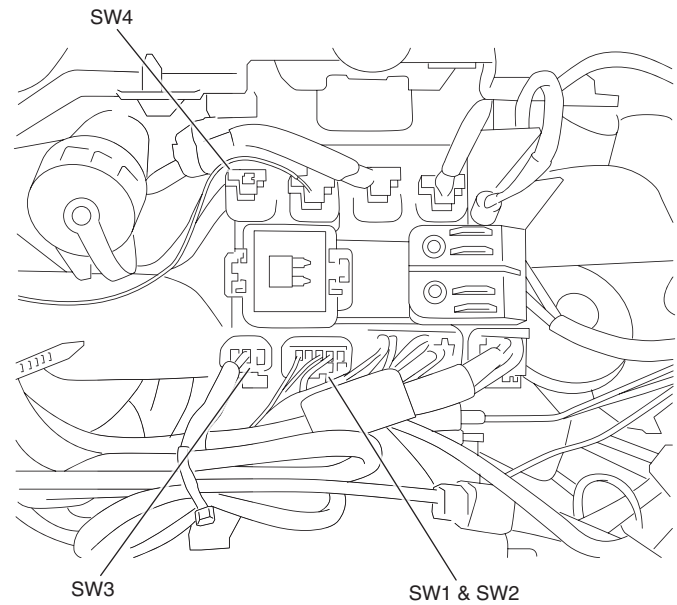
Route the wire through the gap in the body that the A pillar goes through.



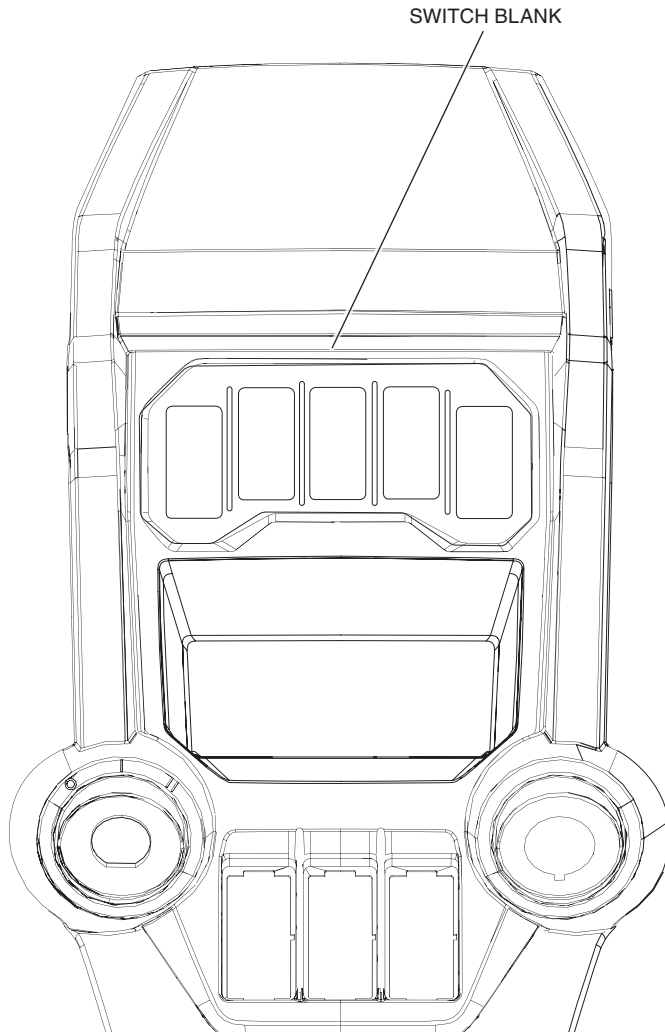
8. Remove the hood and pull back the rubber guard so you can access the back of the instrument panel. (The Fuse Box is not shown in image.)



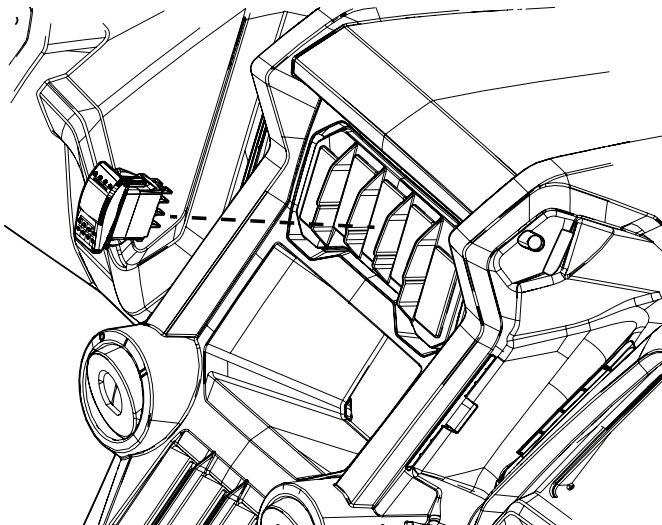
9. Connect the supplied harness to an open power connector on the fuse box. Make sure the load on that fuse is not more than the rated fuse size.



10. Remove the Switch Blank. Use care to not damage, as they need to be used again.



11. Route corresponding SW connector (used for fuse box connection) through blank and connect to switch. Fit the Aux Lights switch into the open slot. (See Fuse Box Mount Kit Installation Instructions for details)



12. Reinstall the switch panel.
13. Aim lights and tighten bolt.
14. Use the supplied zip ties to secure the wire harness away from any hot or moving parts.
15. Reinstall the rubber guard and hood.