



# INSTALLATION INSTRUCTIONS

Accessory

FUSE BOX MOUNT KIT  
P/N 0SS26-HL6-A00

Application

SXS1000S2X/S2XD/S2R/  
S4X/S4XD

Publication No.

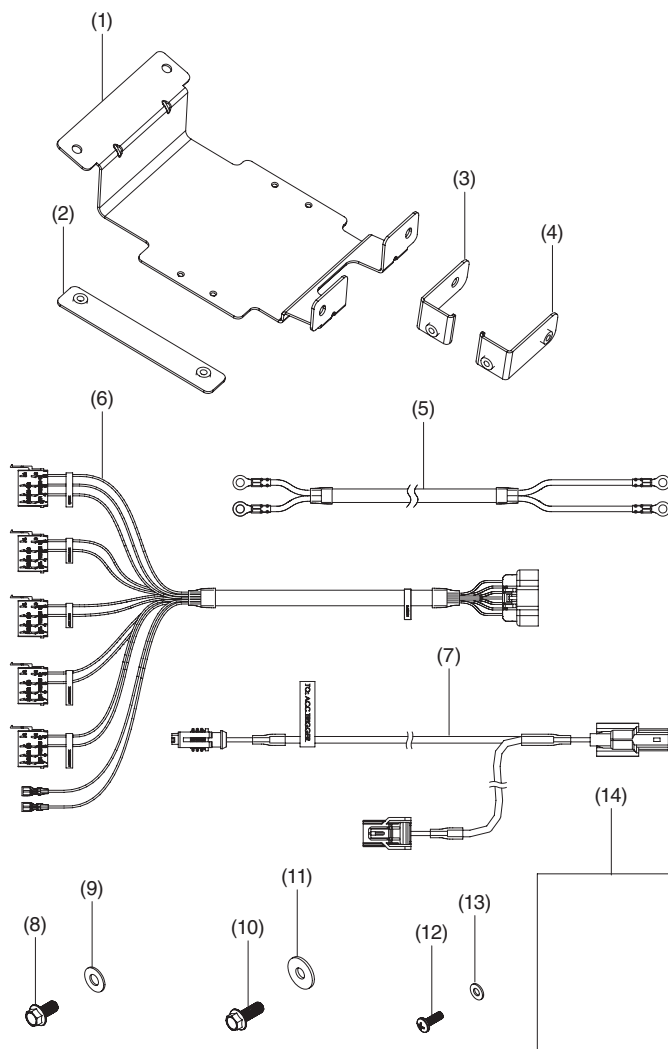
MII 17811

Issue Date

April 2022

**Honda Dealer: Please give a copy of these instructions to your customer.**

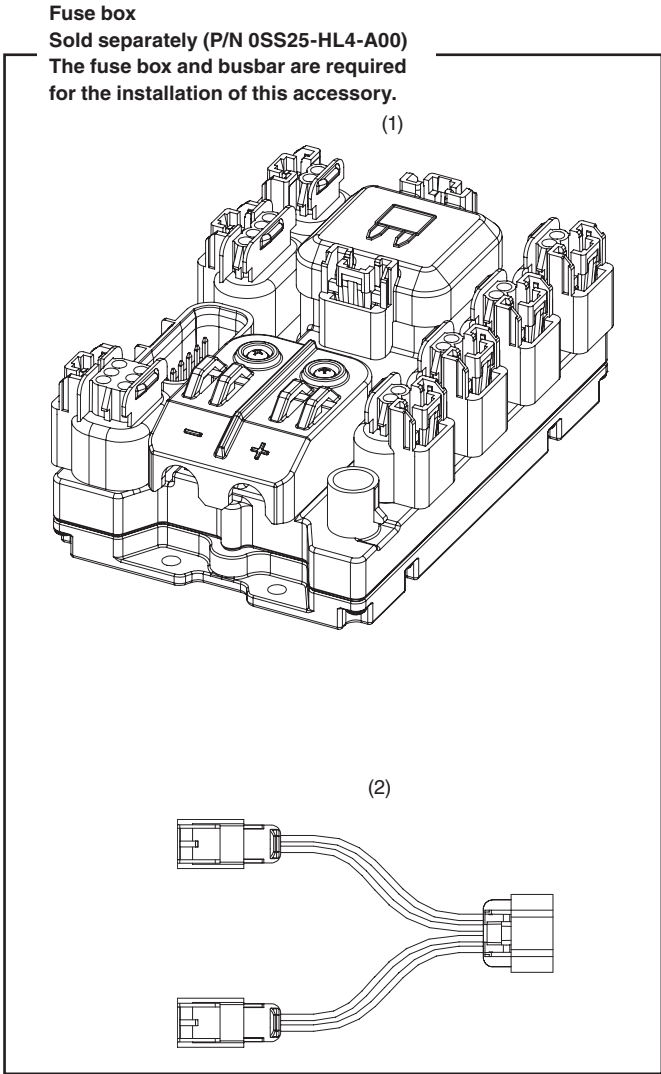
## PARTS LIST



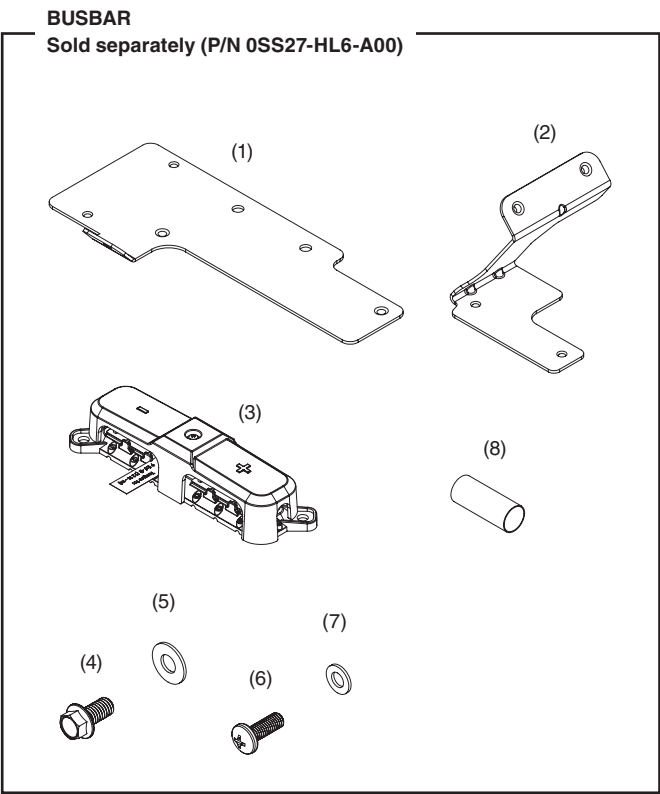
No.	Description	Qty
(1)	Fuse box mounting plate	1
(2)	Front under bracket	1
(3)	Driver side L-bracket	1
(4)	Passenger side L-bracket	1
(5)	Input power cables	1
(6)	Switch wiring harness	1
(7)	Accessory trigger cable	1
(8)	8 mm hex head M6 flange screw, 12 mm long	4
(9)	M6 flat washer, 14 mm o.d.	4
(10)	8 mm hex head M6 flange screw, 16 mm long	2
(11)	M6 flat washer, 18 mm o.d.	2
(12)	M4 × 0.7 phillips screw, 12 mm long	4
(13)	M4 flat washer	4
(14)	Installation Instructions URL	1

TOOLS REQUIRED

- Torque wrench or driver
- Socket (8 mm)
- Socket (10 mm)
- #1 phillips bit
- #2 phillips bit



No.	Description	Qty
(1)	Fuse box switcher	1
(2)	Harness, 4-pin to 2-pin (Y-splitter)	1



No.	Description	Qty
(1)	Main busbar mounting plate	1
(2)	Busbar lower support bracket	1
(3)	Busbar	1
(4)	M6 × 12 mm flange screw (8 mm head)	4
(5)	M6 × 14 mm flat washer	4
(6)	Phillips pan-head screw M5 × 14 mm	2
(7)	M5 × 10 mm flat washer	2
(8)	Heat shrink	2

TORQUE CHART

Item	N-m	kgf-m	lbf-ft
8 mm flange screw	7.8	0.8	5.8
10 mm nut	12.0	1.2	9.0
Phillips head screw	2.5	0.3	2.0

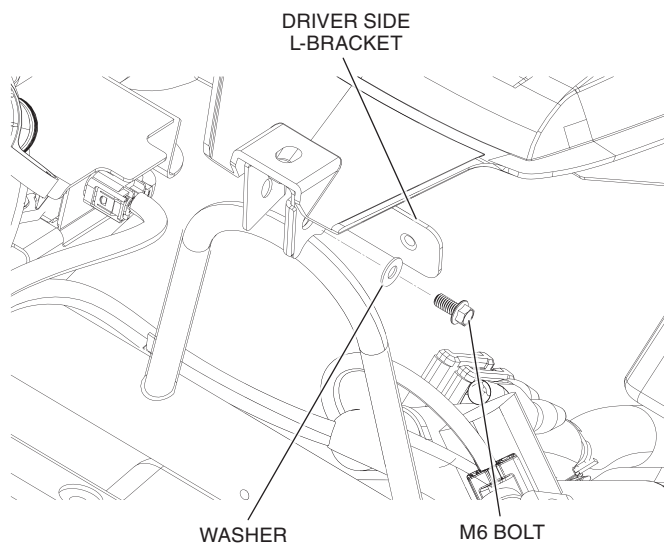
## INSTALLATION

**NOTE: Y-Splitter included with Fuse Box is to be used when installing additional Honda Accessories.**

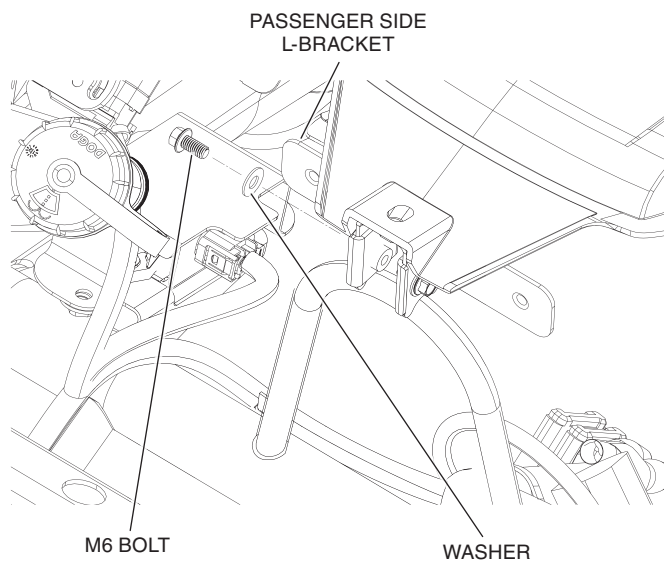
**NOTE: Connector caps on Fuse Box are to be installed when connection is not in use.**

1. Refer to the vehicle service manual and remove the following parts:
  - Hood
  - Ground cable connection to battery
2. Slide Driver Side L-Bracket through the back of the U-Brace. Loosely install the bracket with 1 M6 bolt and washer.

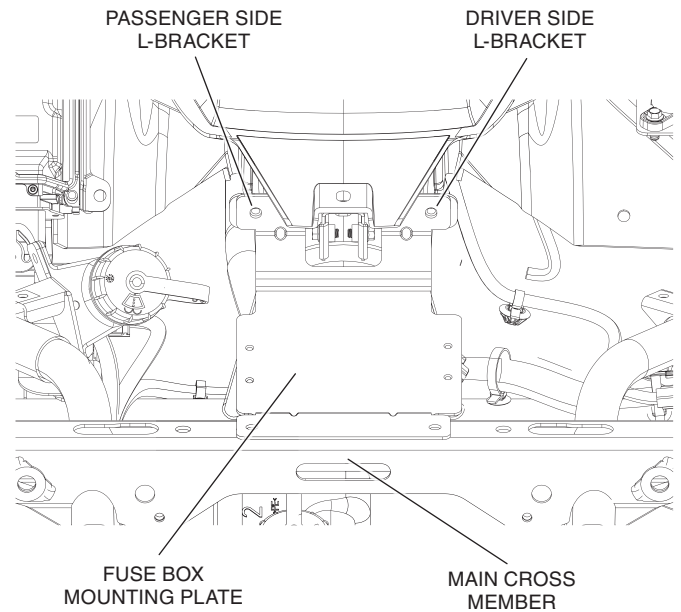
**NOTE: Align the bracket to the bottom of each hole in the U-brace.**



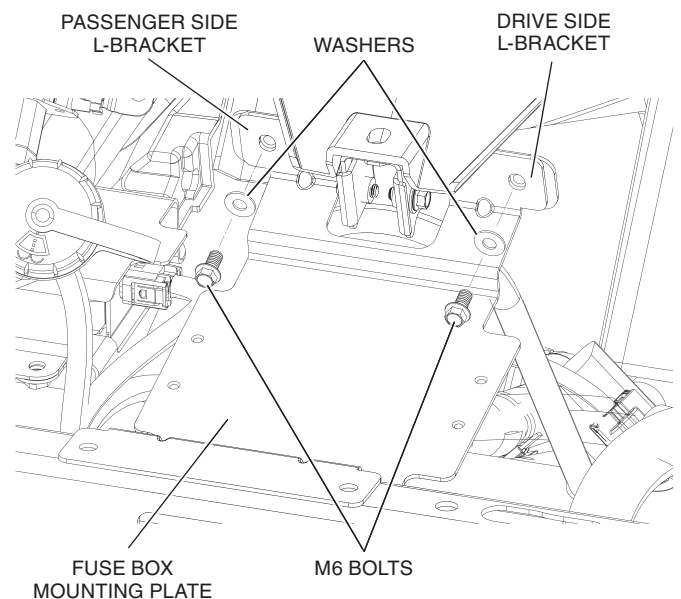
3. Slide Passenger Side L-Bracket through the back of the U-Brace. Loosely install the bracket with 1 M6 bolt and washer.



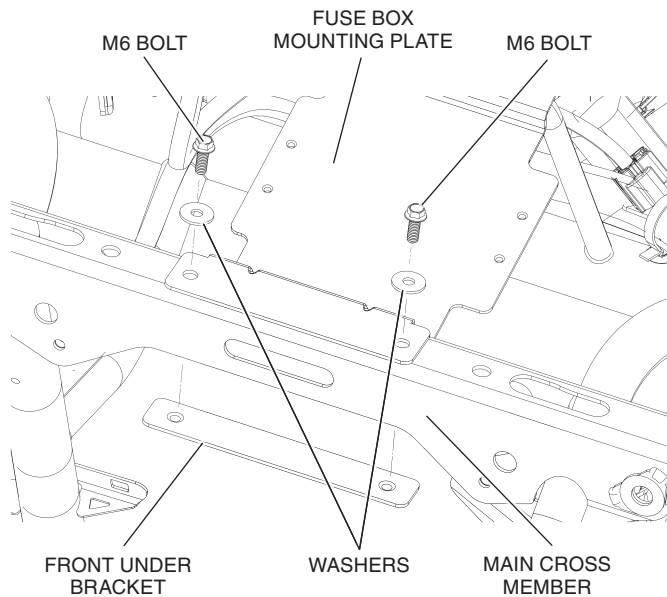
4. Rest Fuse Box Mounting Plate on top of the main cross member, above and behind the radiator. Make sure the rear tabs and bolt holes of the Fuse Box Mounting Plate line up with the Driver and Passenger Side L-Brackets installed in previous step.



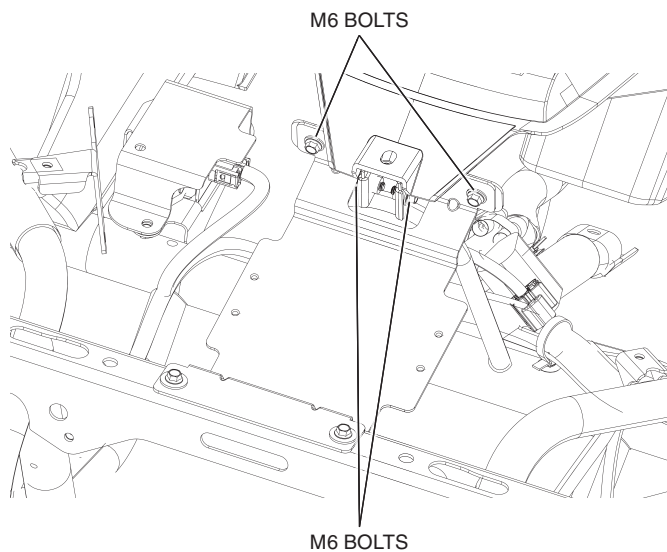
5. Attach Fuse Box Mounting Plate to the two loosely installed Driver and Passenger Side L-Brackets using 2 M6 bolts and washers.



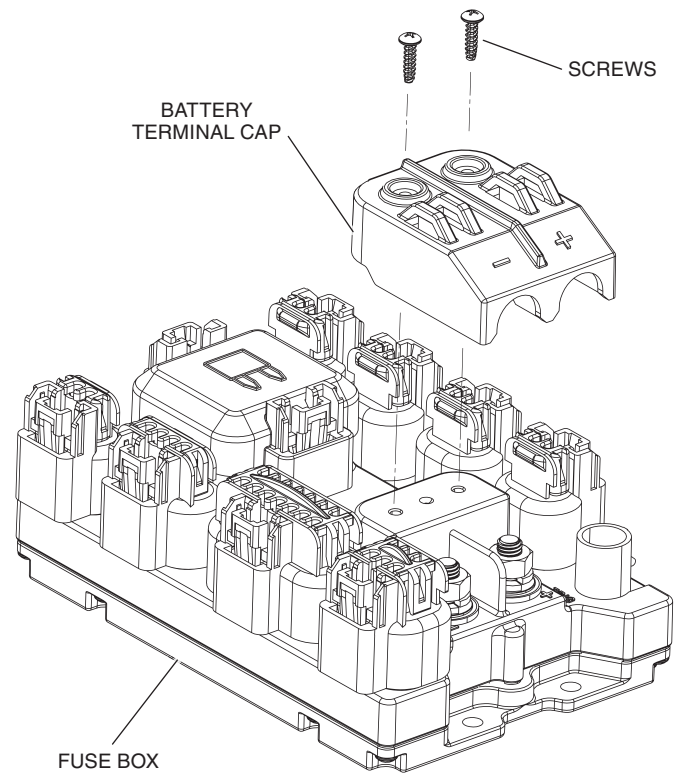
6. Hold the Front Under Bracket below the main cross member. Thread the 2 M6 bolts and washers through the Fuse Box Mounting bracket, main cross member and Front Under Bracket as shown. Torque to 7.8 Nm (5.8 lbf-ft).



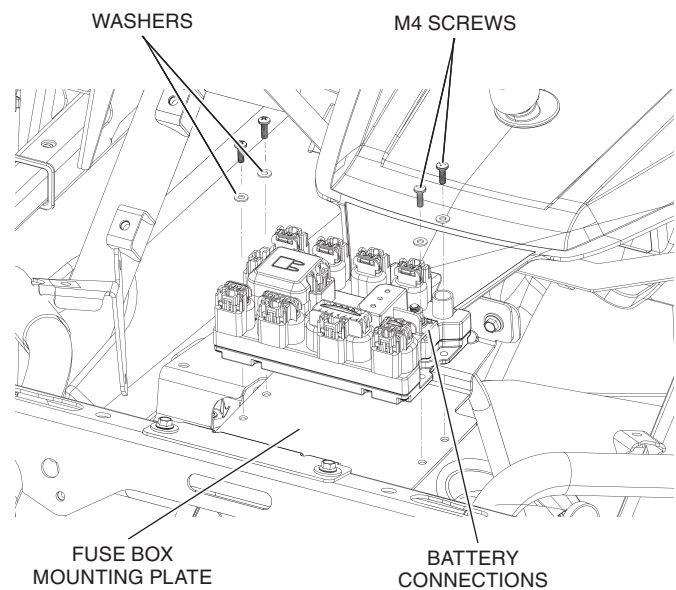
7. Tighten the M6 Bolts that were loosely installed in Steps 2, 3 and 5. Torque to 7.8 Nm (5.8 lbf-ft.)



8. Remove the two-fuse box battery terminal cap screws and cap. Note the polarity of each terminal on the cap for future reference.

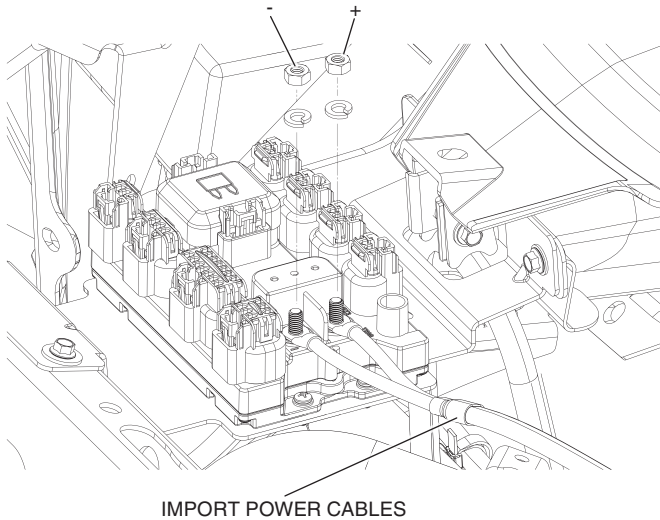


9. Mount the Fuse Box to the Fuse Box Mounting Plate, with the battery connections facing the driver's side, using 4 M4 screws and washers.



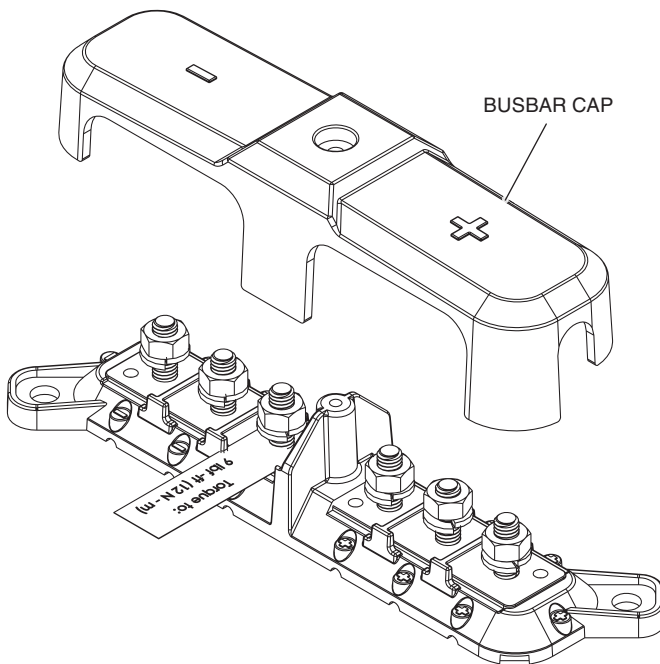


10. Attach the Input Power Cables to the fuse box's positive and negative terminals as shown.



11. Remove busbar cap and cap screw.

BUSBAR CAP SCREW

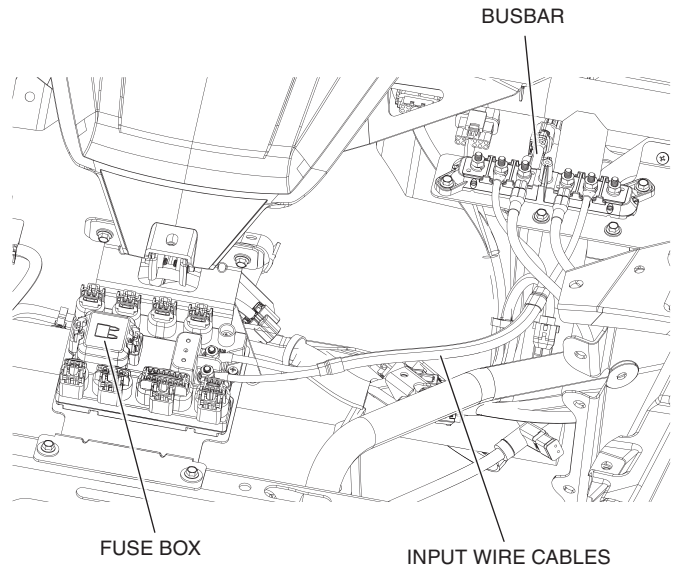


BUSBAR CAP

12. Route the Input Wire Cables from the Fuse Box to available posts on the Busbar as shown in the image. Connect positive (+) and negative (-) wire cables to Busbar as needed.

**Torque nuts to 12 N·m (9 lbf·ft).**

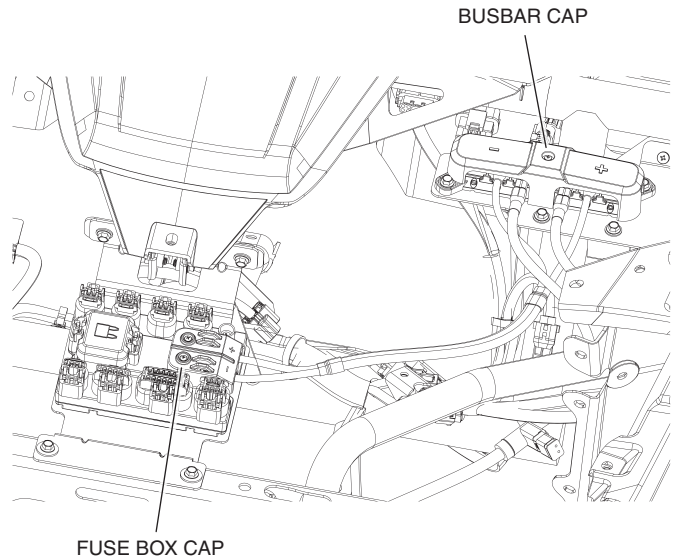
**⚠ WARNING: Do not to exceed the recommended torque specs or damage to busbar module can occur**



FUSE BOX

INPUT WIRE CABLES

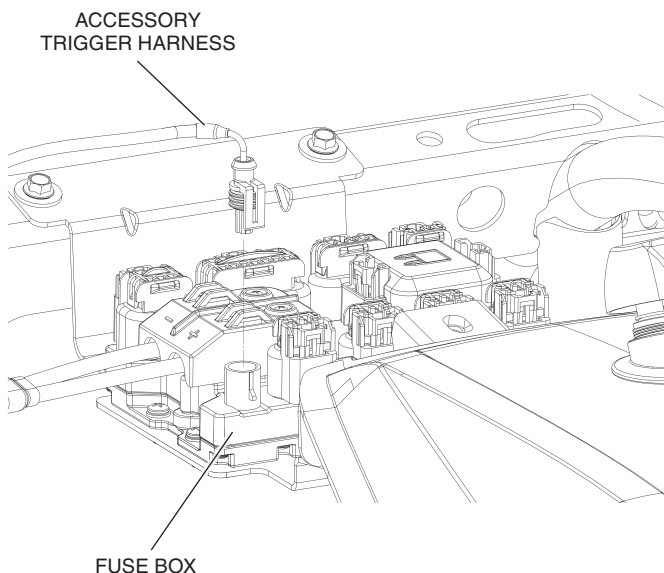
13. Re-attach both the busbar and fuse box caps.



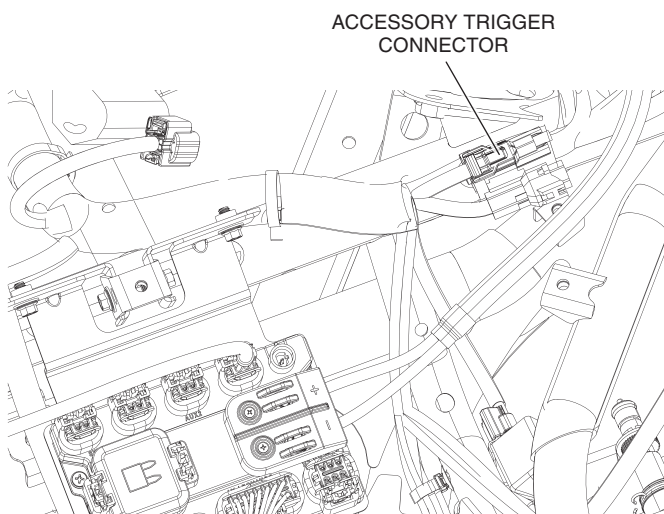
BUSBAR CAP

FUSE BOX CAP

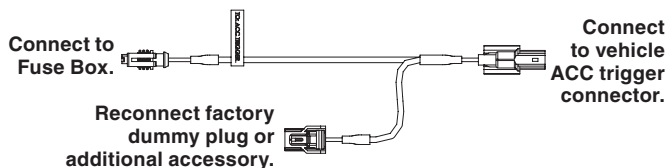
14. Connect the Accessory Trigger Harness to the Fuse Box as shown.



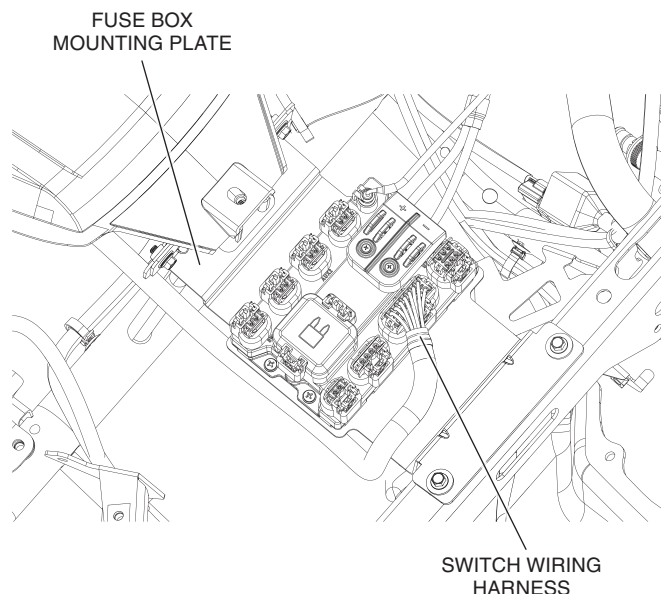
15. Route the Accessory Trigger Harness to the Accessory Trigger Connector located near the firewall.



16. Connect the Accessory Trigger Harness to the Accessory Trigger Connector. Reconnect factory dummy plug or additional accessory if equipped as shown in diagram. Zip tie as needed.



17. Connect the Switch Wiring Harness to the Fuse Box and route it around the passenger side of the Fuse Box Mounting Plate towards the switch location in the dash. Zip tie as needed.



18. Connect the opposing side of this harness to the corresponding switches.

**NOTE: Switches are provided with each Honda Accessory. Installation instructions are available with each specific accessory purchased.**

19. Reinstall the following in accordance with the vehicle service manual.

- Hood
- Ground cable connection to battery