



INSTALLATION INSTRUCTIONS

Accessory

A-ARM GUARDS[X TYPE]
P/N 0SK10-HL6-A01

Application

SXS1000S2X/S2XD/S4X/S4XD

Publication No.

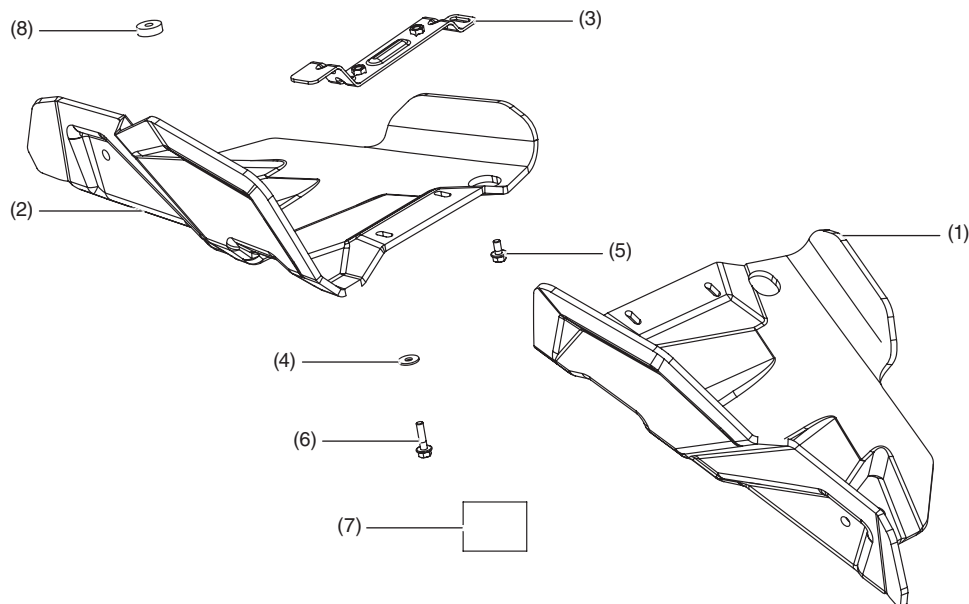
MII 17811

Issue Date

March 2022

Honda Dealer: Please give a copy of these instructions to your customer.

PARTS LIST



No.	Description	Qty
(1)	Driver side A-arm guard	1
(2)	Passenger side A-arm guard	1
(3)	Mounting bracket	2
(4)	Fender washer	6
(5)	10 × 12 mm flange bolt	2
(6)	10 × 25 mm flange bolt	8
(7)	Installation instructions URL	1
(8)	Spacer	2

TORQUE CHART

Item	N·m	kgf·m	lbf·in
10 mm flange bolt	10.0 ± 2.0	1 ± 0.20	89 ± 18

TOOLS REQUIRED

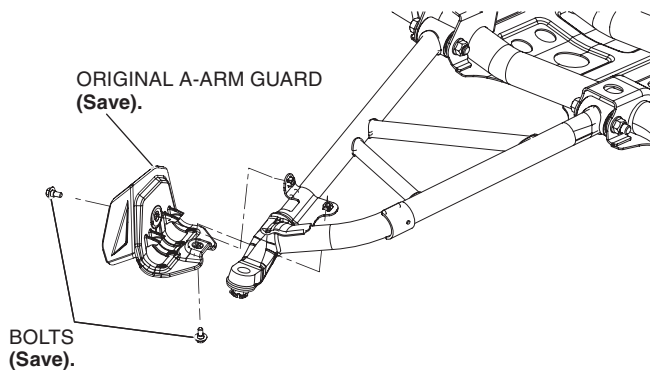
Socket (10 mm)
Ratchet
Torque wrench
Box-end wrench (10 mm)

INSTALLATION

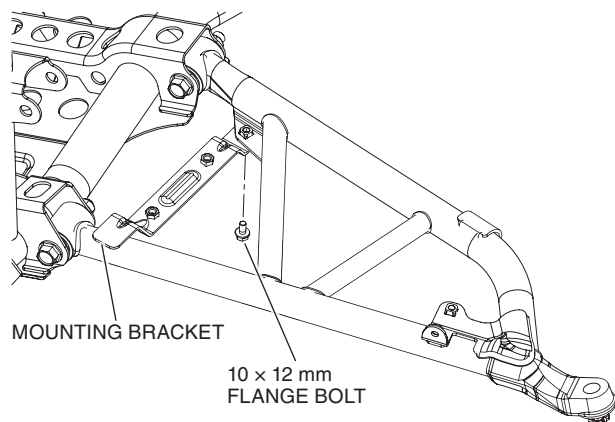
⚠ CAUTION: To prevent burns, allow the engine, exhaust system, radiator, etc., to cool before installing the accessory.

1. Remove the original A-arm guard and hardware as shown.

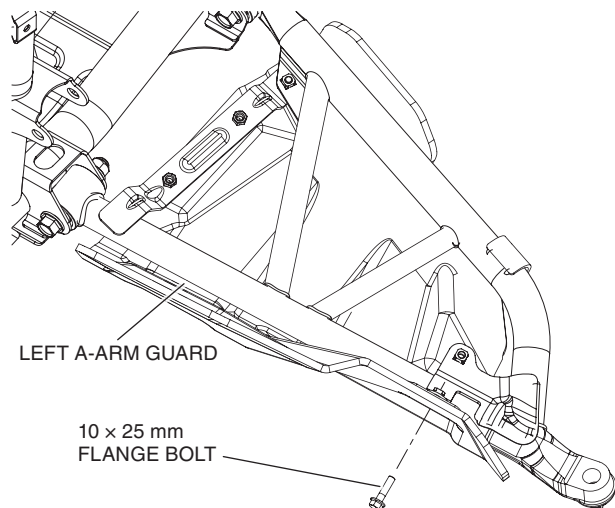
<Left side>



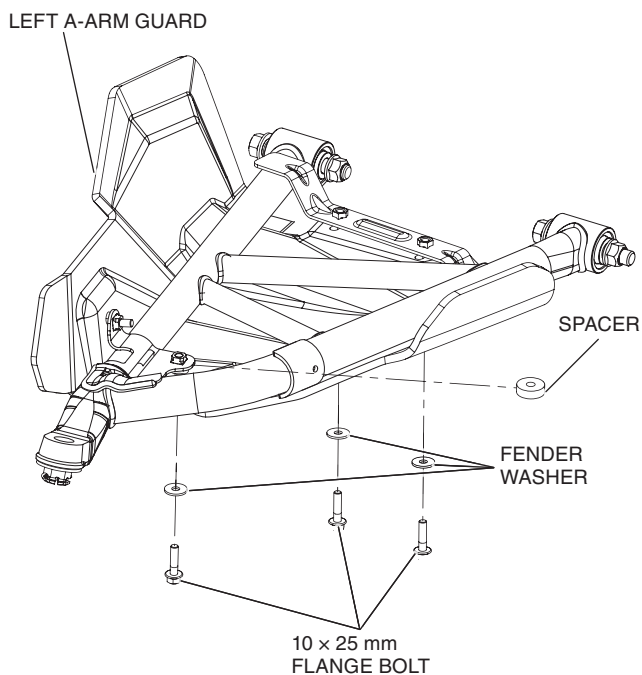
2. Loosely install the mounting bracket with the 10 × 12 mm flange bolt as shown.



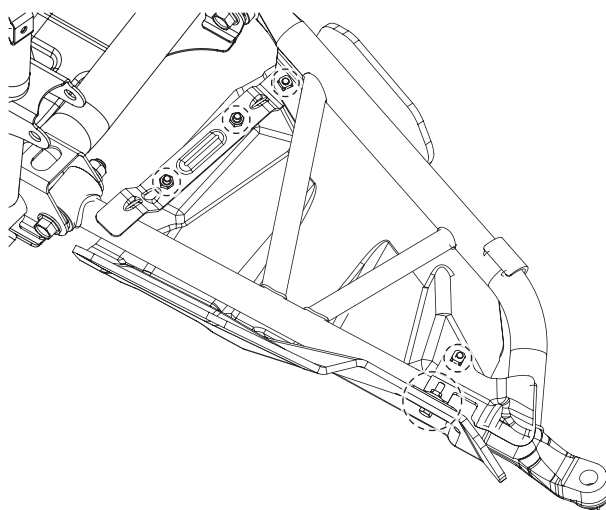
3. Hold the left A-arm guard against the left A-arm as shown. Loosely install the 10 × 25 mm bolt on front of the A-arm guard.



4. Loosely install the spacer, the fender washers and the 10 × 25 mm flange bolts starting with the closest to the wheel.



5. Tighten all the bolts to the value specified in the TORQUE CHART starting with the one facing forward.



6. Repeat steps 1 through 5 on the right side.